



NIKKI HOMES
PROPERTY CONSULTANTS

Park Court, Stratford-upon-Avon £795 pcm

Well presented and spacious two bedroom apartment within walking distance of town.

Looking for a spacious two bedroom apartment?

Doesn't get much bigger than this!

This first floor apartment in this quiet block has lots of space to offer.

Entrance hallway, leading into kitchen fitted with oven, hob, fridge, freezer and washing machine.

Large living/dining room finished with carpeted flooring and large window over the front garden.

Leading on to; Separate toilet

and bathroom with sink and bath with shower over. Finished with vinyl flooring

Two handy storage cupboards in the hallway.

Bedroom 1 - a good size double room with views over the front

Bedroom 2 - another good size double room with views over the rear

Sorry no sharers or smokers.

Garden : There is a small outhouse for storage and washing line facility aswell as a shared garden area.

Council Tax : Council tax band B

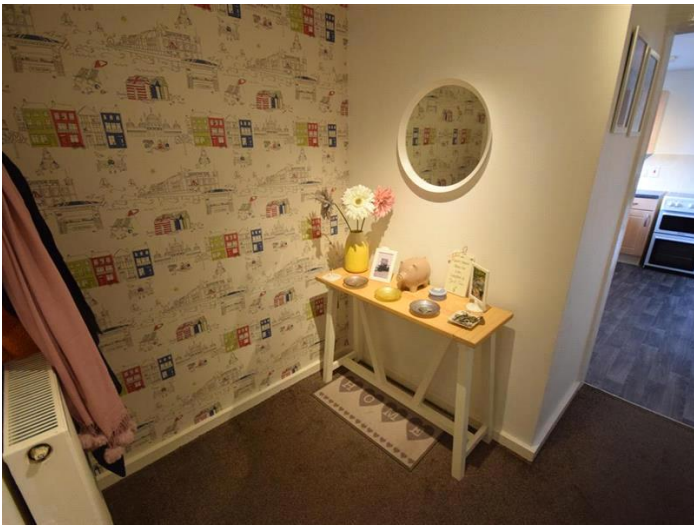
EPC : Rating C

Available: 01.06.2026

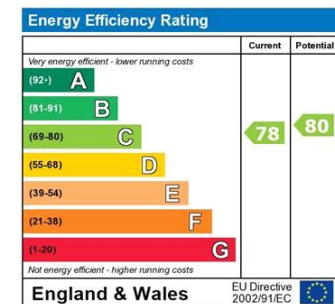
Council Tax Band: B (Stratford District Council)

Deposit: £917.3

Holding Deposit: £183.46



Whilst every effort is made to ensure the accuracy of these details, it should be noted that the measurements are approximate only. Floorplans are for representation purposes only and prepared according to the RICS Code of Measuring Practice by our floorplan provider. Therefore, the layout of doors, windows and rooms are approximate and should be regarded as such by any prospective tenant.



The energy efficiency rating is a measure of the overall efficiency of a home. The higher the rating the more energy efficient the home is and the lower the fuel bills will be.

