



23 Amis Way, Stratford-Upon-Avon

Stratford-Upon-Avon

In Excess of **£385,000**



23 Amis Way

Stratford-Upon-Avon, Stratford-Upon-Avon

Charming, versatile townhouse on Amis Way, Stratford-upon-Avon. Private rear garden, off-road parking, garage. Ideal location in a friendly community near schools, shops, and riverside walks. Council Tax band: E

Tenure: Freehold

EPC Energy Efficiency Rating: C

EPC Environmental Impact Rating: C

- Walking distance of town
- Off road parking and garage
- Low maintenance garden
- HUGE main bedroom
- En-suite to main bedroom
- Walking distance of the local shop and school





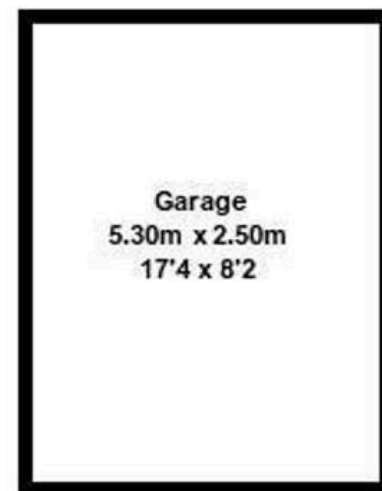
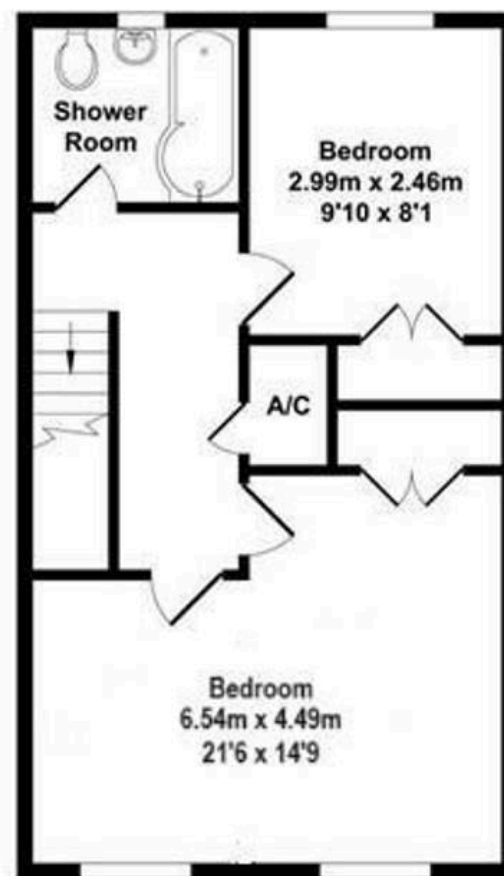
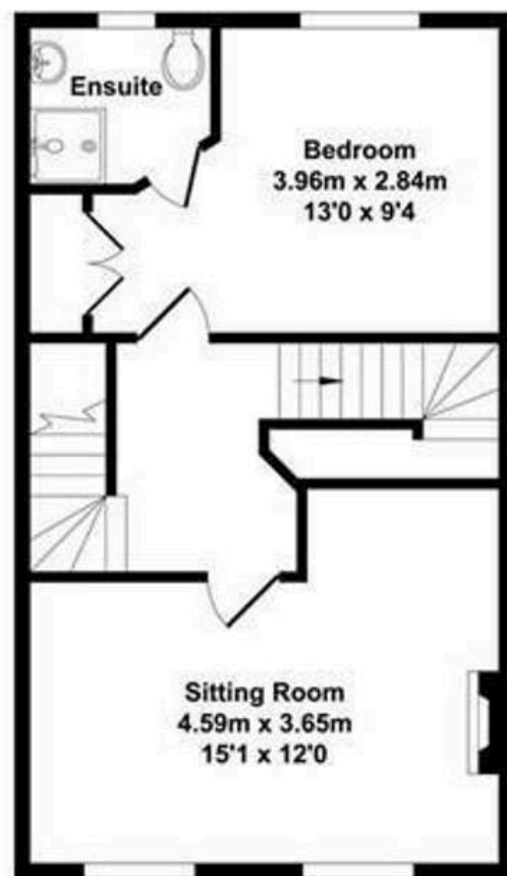
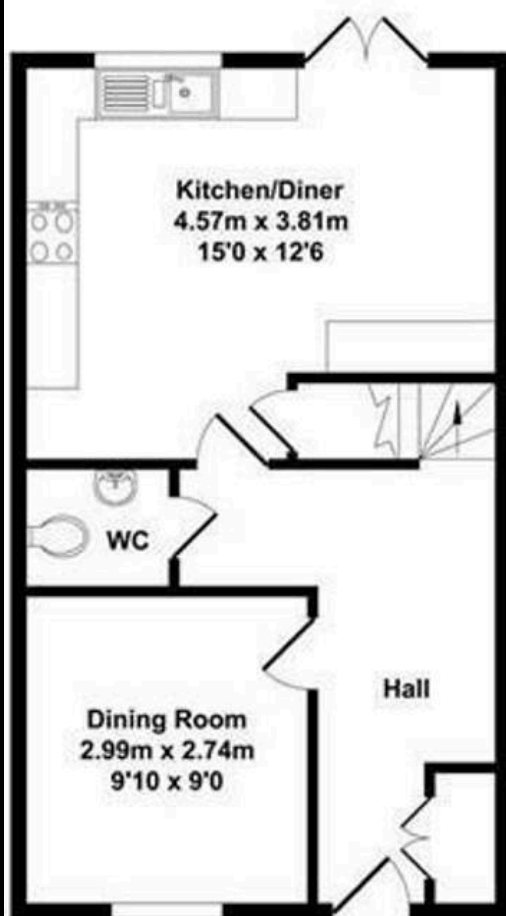




GARDEN

GARAGE

Single Garage



Ground Floor
Approx. Floor
Area 37.19 Sq.M.
(400 Sq.Ft.)



1st Floor
Approx. Floor
Area 37.19 Sq.M.
(400 Sq.Ft.)

2nd Floor
Approx. Floor
Area 37.19 Sq.M.
(400 Sq.Ft.)

Total Approx. Floor Area 124.82 Sq.M. (1344 Sq.Ft.)

You can include any text here. The text can be modified upon generating your brochure.



NIKKI HOMES

PROPERTY CONSULTANTS