



6 Marsh Road, Wilmcote

Stratford-Upon-Avon

Guide Price **£575,000**

6 Marsh Road

Wilmcote, Stratford-Upon-Avon

Beautiful 1930s dormer bungalow with South Warwickshire village views. Light-filled, 3 beds, 2 baths, modern kitchen, generous garden space, potential for extension. Ideal for families or downsizers.

Council Tax band: D

Tenure: Freehold

EPC Energy Efficiency Rating: D

EPC Environmental Impact Rating: E

- STUNNING Views to rear
- Off road parking
- Popular village location
- Versatile living accommodation
- Potential to extend Subject to planning
- Three double bedrooms | Two bathrooms
- 200ft rear garden
- PERMISSION to extend







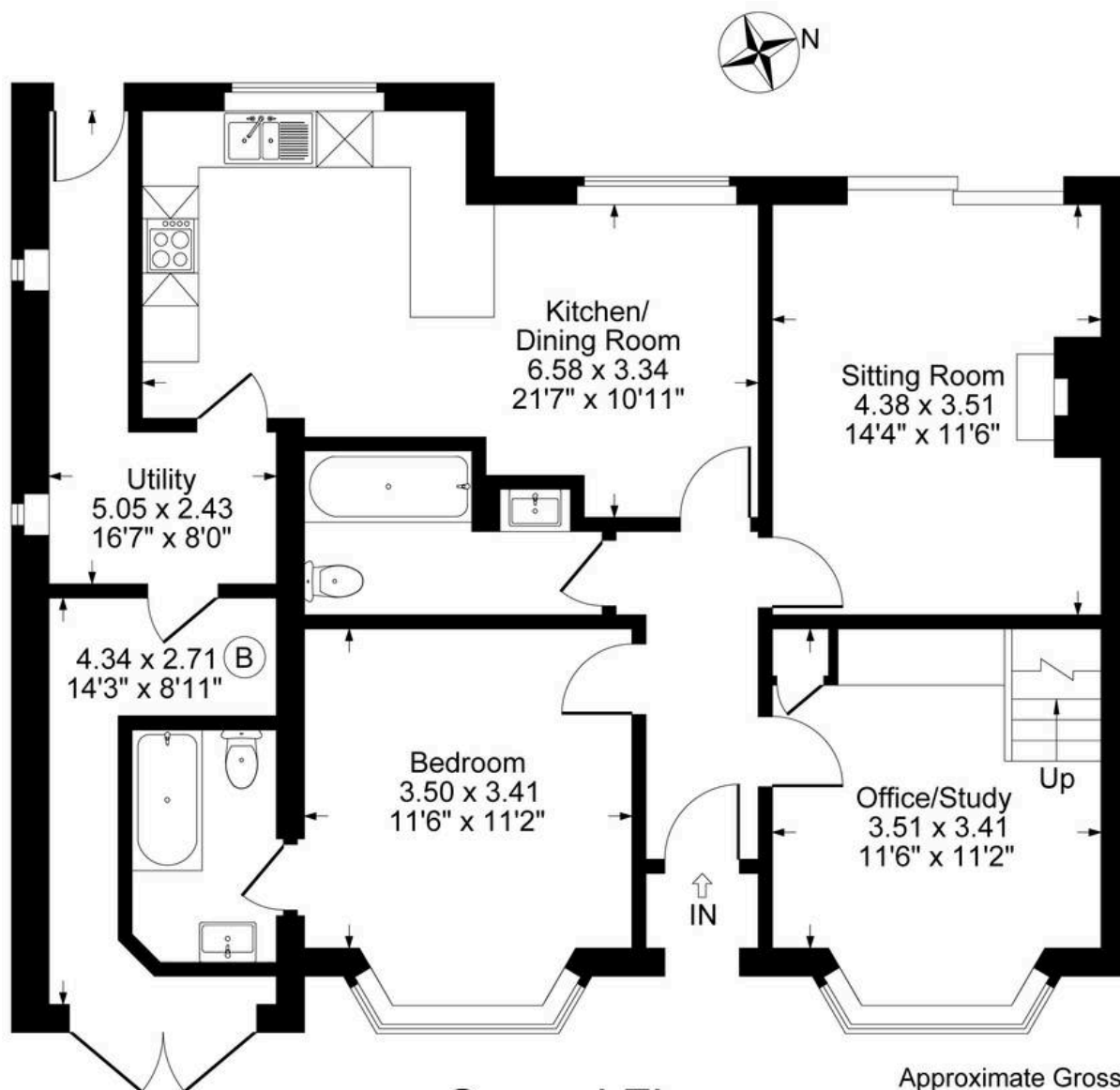


GARDEN

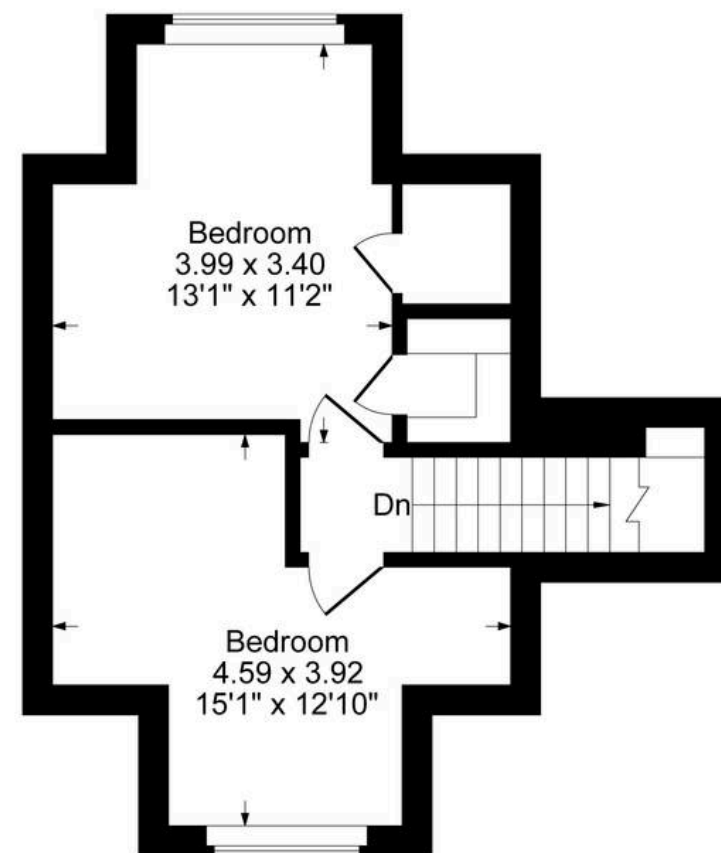
OFF STREET

4 Parking Spaces





Ground Floor



First Floor

Approximate Gross Internal Area
 Ground Floor = 96.12 sq m / 1035 sq ft
 First Floor = 32.07 sq m / 345 sq ft
 Total Area = 128.19 sq m / 1380 sq ft
 Illustration for identification purposes only,
 measurements are approximate, not to scale.

You can include any text here. The text can be modified upon generating your brochure.



NIKKI HOMES

PROPERTY CONSULTANTS