



7 Park House Church Road, Snitterfield

Stratford-Upon-Avon

Offers Over £600,000

7 Park House Church Road

Snitterfield, Stratford-Upon-Avon

Stunning refurbished character property featuring three double bedrooms and two bathrooms, garage and parking, ideally located in a sought-after village just five miles from Stratford-upon-Avon.
Council Tax band: E

Tenure: Freehold

- Character property
- Three double bedrooms, two bathrooms
- Large kitchen diner
- Conservatory
- Village location easy access to M40 and within 5 miles of Stratford Upon Avon
- Single garage with one additional parking space
- Within walking distance to the local shop, primary school and pub





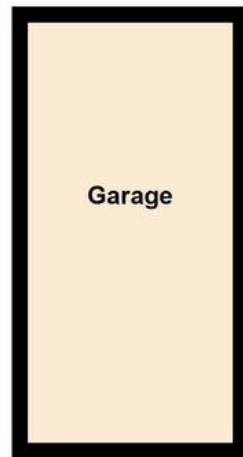
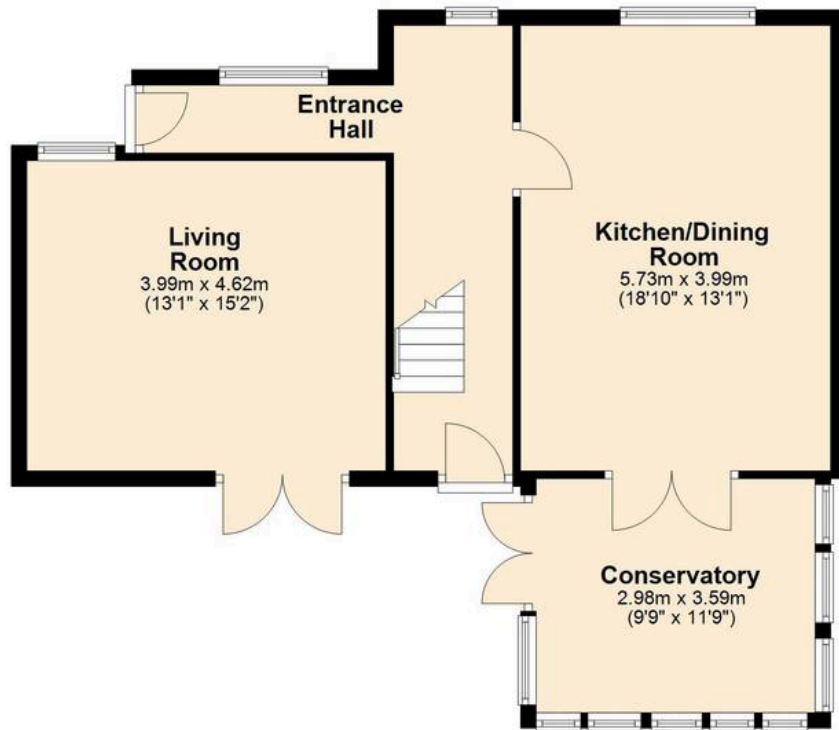






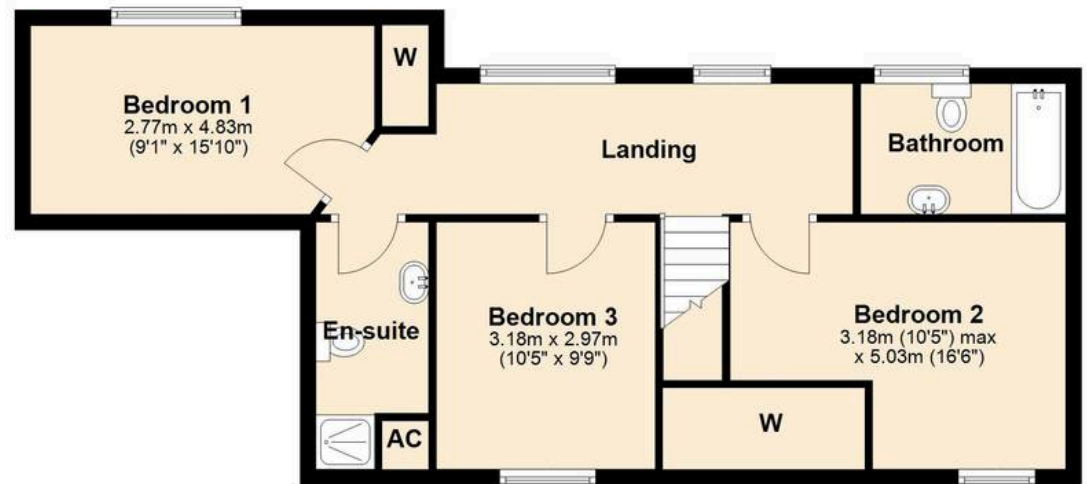
Ground Floor

Approx. 65.2 sq. metres (701.7 sq. feet)



First Floor

Approx. 55.8 sq. metres (600.9 sq. feet)



Total area: approx. 121.0 sq. metres (1302.6 sq. feet)

You can include any text here. The text can be modified upon generating your brochure.



NIKKI HOMES

PROPERTY CONSULTANTS