



Garden Flat, Wolverton Road, Norton Lindsey, Warwick
£625 pcm

This open plan one bedroom apartment is situated in the heart of a quiet village location.

Open plan kitchen/living room

Double bedroom

Large bathroom and separate utility room

Very small courtyard garden area

Off road parking for one car

PRICE Includes Water costs.

The landlord would like a SOLE person only.

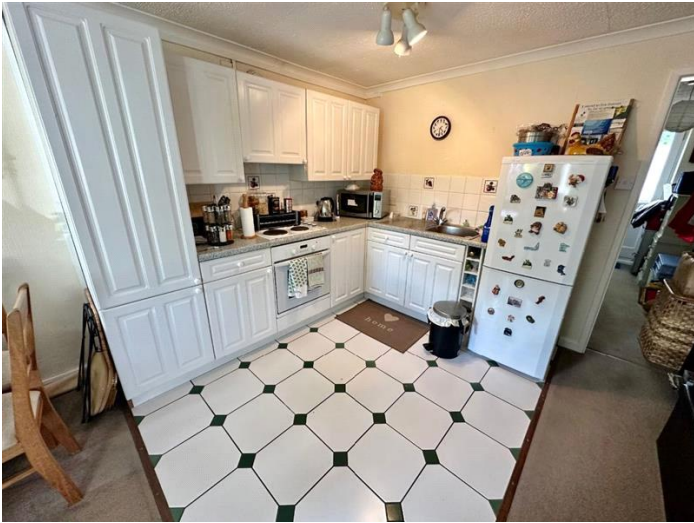
Available for; 6 Months

Available APRIL

Sorry no pets

Deposit: £721.15

Holding Deposit: £144.23



Whilst every effort is made to ensure the accuracy of these details, it should be noted that the measurements are approximate only. Floorplans are for representation purposes only and prepared according to the RICS Code of Measuring Practice by our floorplan provider. Therefore, the layout of doors, windows and rooms are approximate and should be regarded as such by any prospective tenant.

