



Taymar, Shepherds Place, Kineton, Warwick
£1,675 pcm

4 bedroom semi-detached house to rent **LET**



NIKKI HOMES
PROPERTY CONSULTANTS

Looking for a well presented family home in this popular village location?

Welcome to Taymar a well presented PET FRIENDLY Rental property in the heart of this village.

Briefly consisting of;

Front snug/office space

Stunning Open plan - Living come Dining room with a feature fireplace

leading round too

Kitchen fitted with double oven, hob, dishwasher and space for F/F.

Upstairs you have four good size bedrooms, a family bathroom and en-suite shower room

To the front is a Garage

Off road parking for 2-3 cars

ONE PET CONSIDERED

EPC Rating;

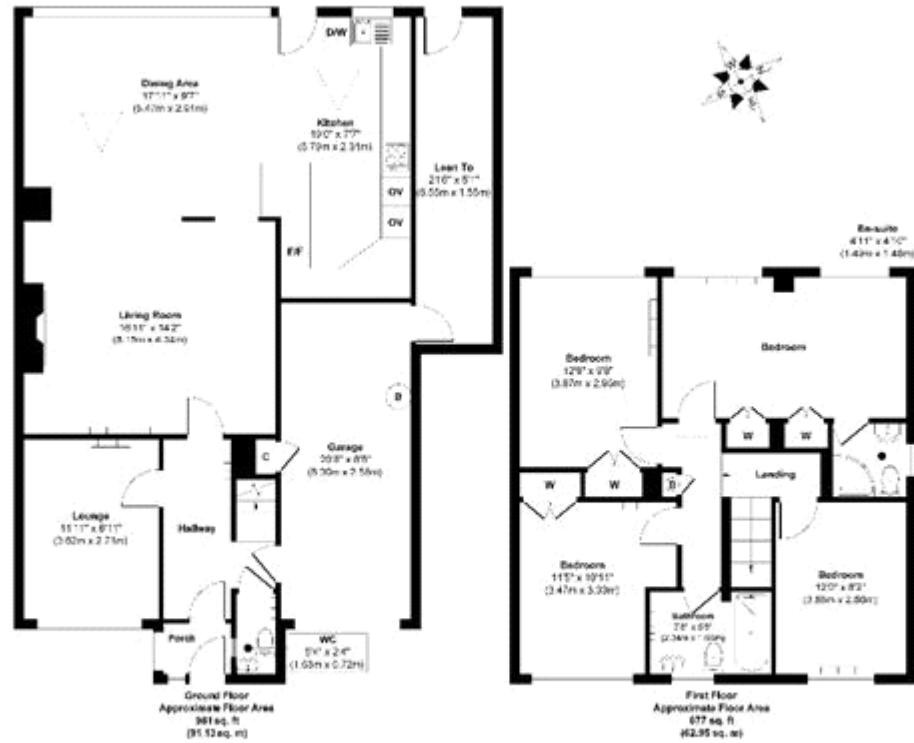
Holding Deposit: £392.30

Parking options: Garage

Garden details: Private Garden



Whilst every effort is made to ensure the accuracy of these details, it should be noted that the measurements are approximate only. Floorplans are for representation purposes only and prepared according to the RICS Code of Measuring Practice by our floorplan provider. Therefore, the layout of doors, windows and rooms are approximate and should be regarded as such by any prospective tenant.



NIKKI HOMES
PROPERTY CONSULTANTS

Viewing by appointment only
Nikki Homes

Office 1, Reids Ind Estate , Welford Road, Long Marston, Warwickshire CV37 8RA
Tel: 01789 532211 Email: hello@nikkihomes.co.uk Website: nikkihomes.co.uk