

9 Vickers Court, Shackleton Village

Stratford-Upon-Avon

In Excess of £600,000

9 Vickers Court

Shackleton Village, Stratford-Upon-Avon

An exceptional six bedroom detached house,
completed in March 2024.

Council Tax band: F

Tenure: Freehold

- New Build in 2024
- Six bedrooms and a study
- South West facing garden
- Ideal location between Stratford Upon Avon and The Cotswolds
- Easy access to the city centre using the Stratford Greenway
- Stunning walks













REAR GARDEN

GARAGE

Single Garage

DRIVEWAY

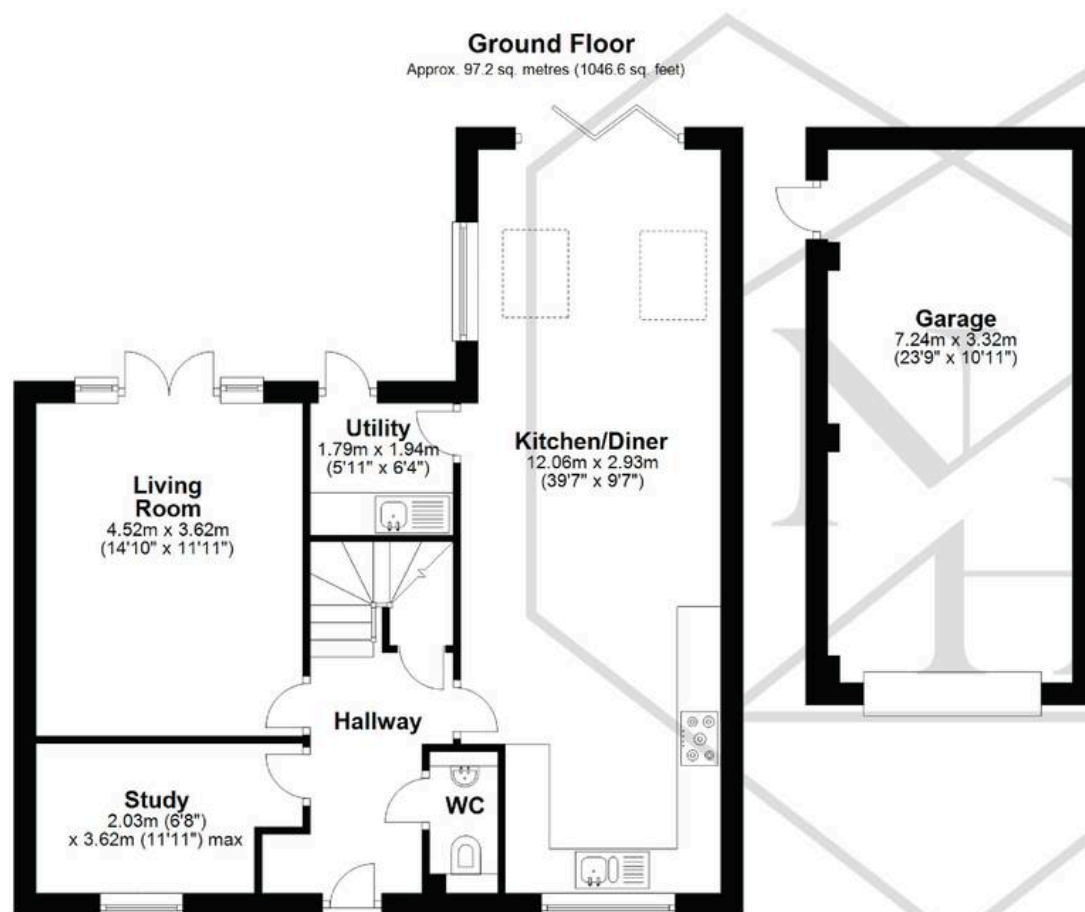
2 Parking Spaces

Parking for two cars in front of the garage along with additional communal parking opposite the house and nearby for all residents.



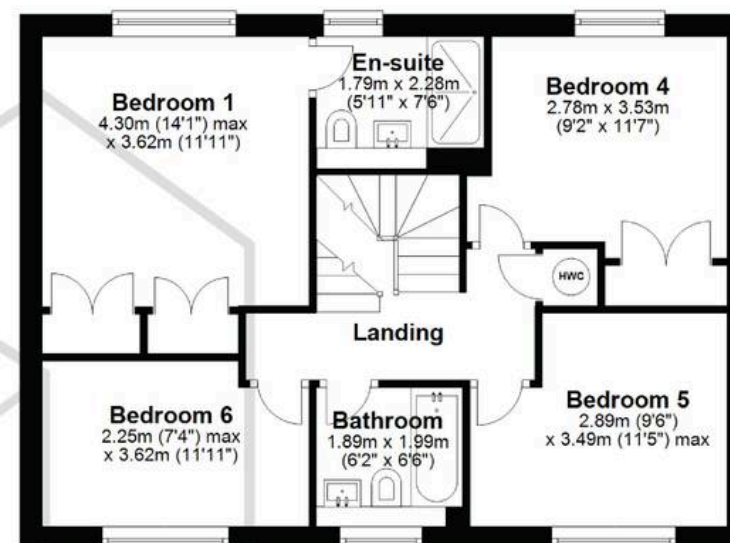
Ground Floor

Approx. 97.2 sq. metres (1046.6 sq. feet)



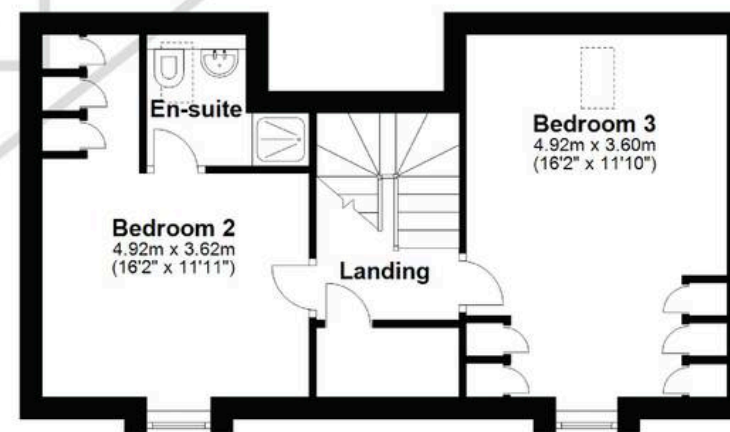
First Floor

Approx. 61.8 sq. metres (665.5 sq. feet)



Second Floor

Approx. 42.9 sq. metres (461.3 sq. feet)



Total area: approx. 201.9 sq. metres (2173.4 sq. feet)

DISCLAIMER - Floor plans shown are for general guidance only. Whilst every attempt has been made to ensure that the floorplan measurements are as accurate as possible, they are for illustrative purposes only.

You can include any text here. The text can be modified upon generating your brochure.



NIKKI HOMES

PROPERTY CONSULTANTS