



11 Tredington Park, Hatton Park
Warwick

£375,000

11 Tredington Park

Hatton Park, Warwick

11 Tredington Park – Ideal for first-time buyers & families. Overlooks Grade II building & green spaces. Planning permission for extension & garage conversion. 3 beds, sunny SW garden with garage access. Parking for 2 cars. Must see!
Council Tax band: C

Tenure: Freehold

EPC Energy Efficiency Rating: C

EPC Environmental Impact Rating:

- Three Bed Link End of Terrace House
- Highly Sought After Residential Area
- Planning for Single Storey Extension & Conversion of Garage Roof Space
- Modernised Bathroom and En-Suite
- Stunning South West Facing Rear Garden
- Parking for Two Cars + Guest Parking









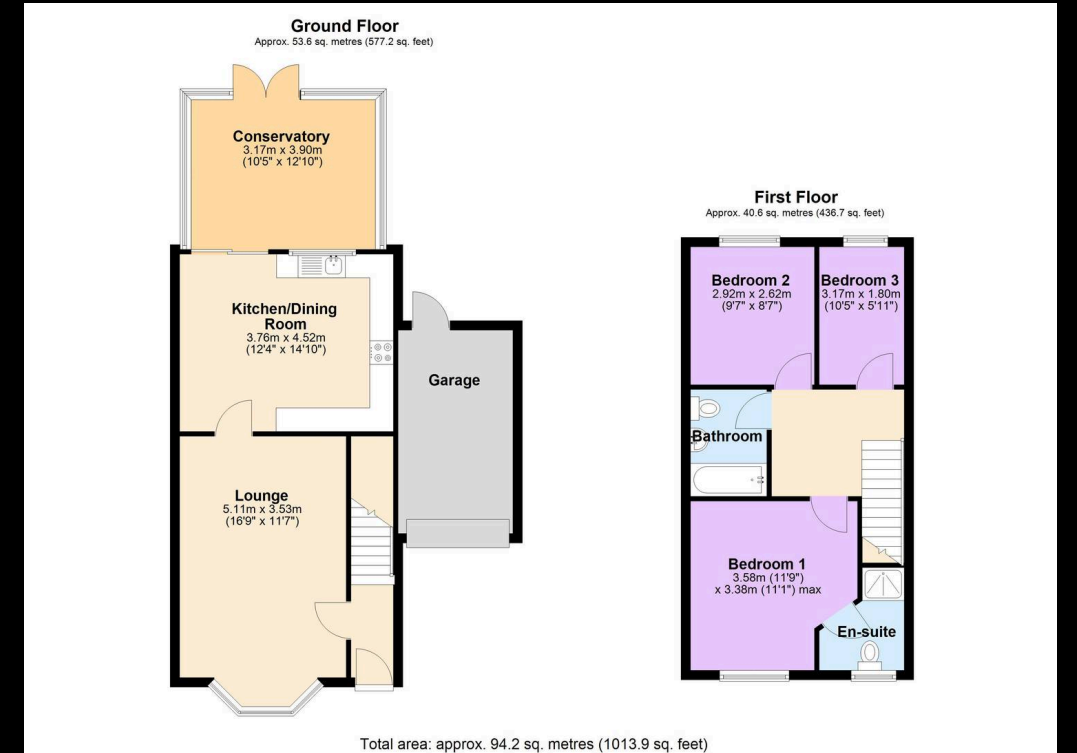
GARDEN

GARAGE

Single Garage

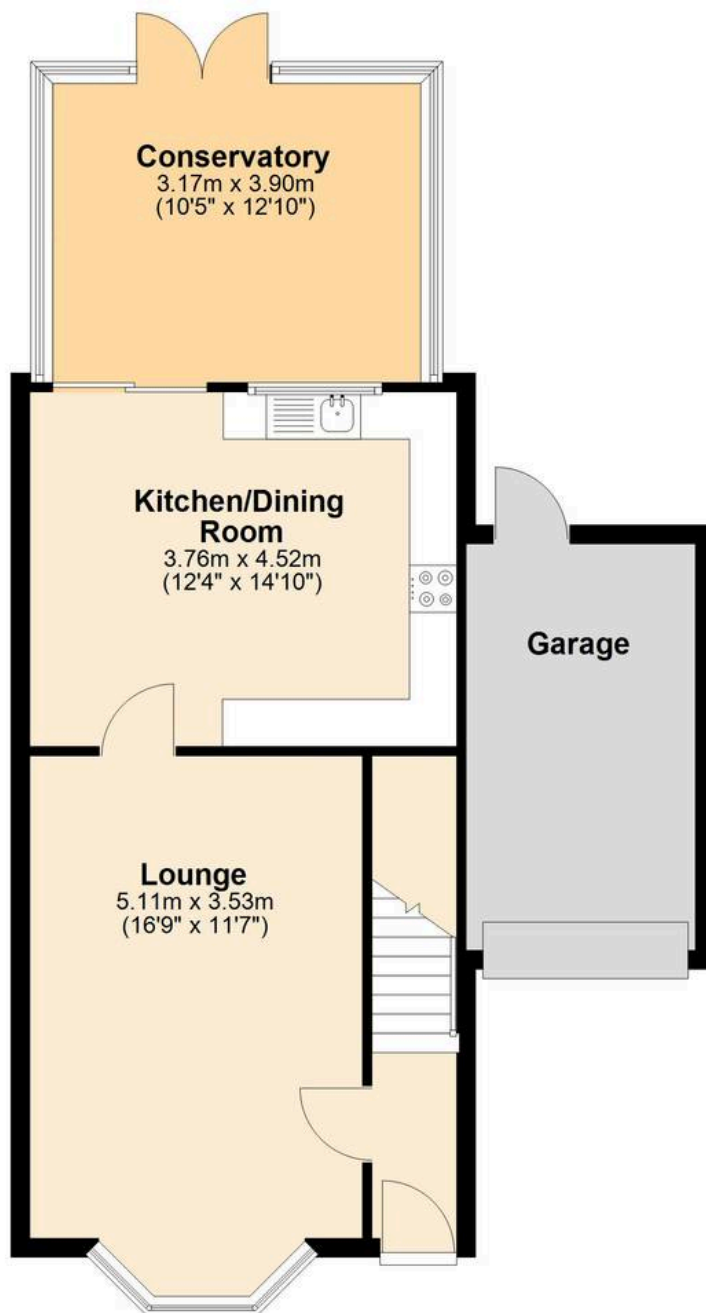
OFF STREET

2 Parking Spaces



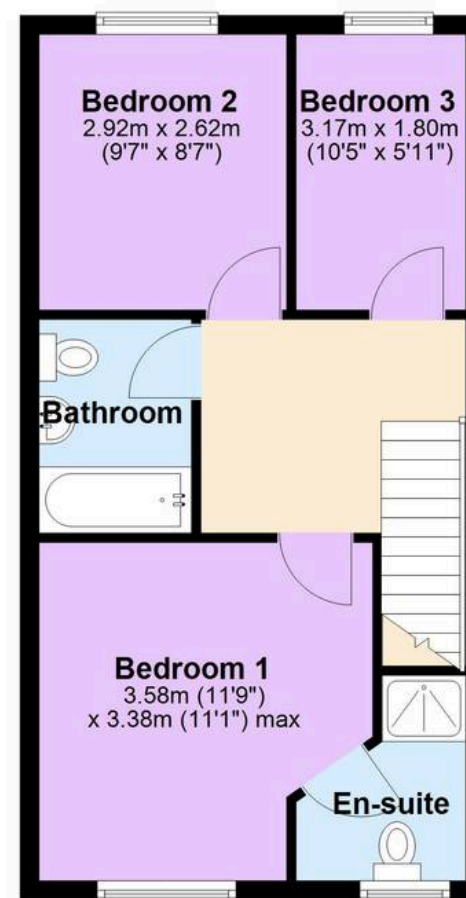
Ground Floor

Approx. 53.6 sq. metres (577.2 sq. feet)



First Floor

Approx. 40.6 sq. metres (436.7 sq. feet)



Total area: approx. 94.2 sq. metres (1013.9 sq. feet)

You can include any text here. The text can be modified upon generating your brochure.



NIKKI HOMES

PROPERTY CONSULTANTS