



Barons Retreat Headland Road, Welford On Avon

Stratford-Upon-Avon

In Excess of **£750,000**

Barons Retreat Headland Road

Welford On Avon, Stratford-Upon-Avon

Spacious detached bungalow in a popular riverside village. 3 bedrooms, 2 reception rooms, kitchen/diner, utility room, garden room. Large rear garden with potential for further development on a near third-acre plot.

Council Tax band: F

Tenure: Freehold

EPC Energy Efficiency Rating: D

EPC Environmental Impact Rating: E

- 1/3 acre plot
- Potential to extend further
- Private rear garden
- Double Garage
- Generous Driveway
- Heart of the village



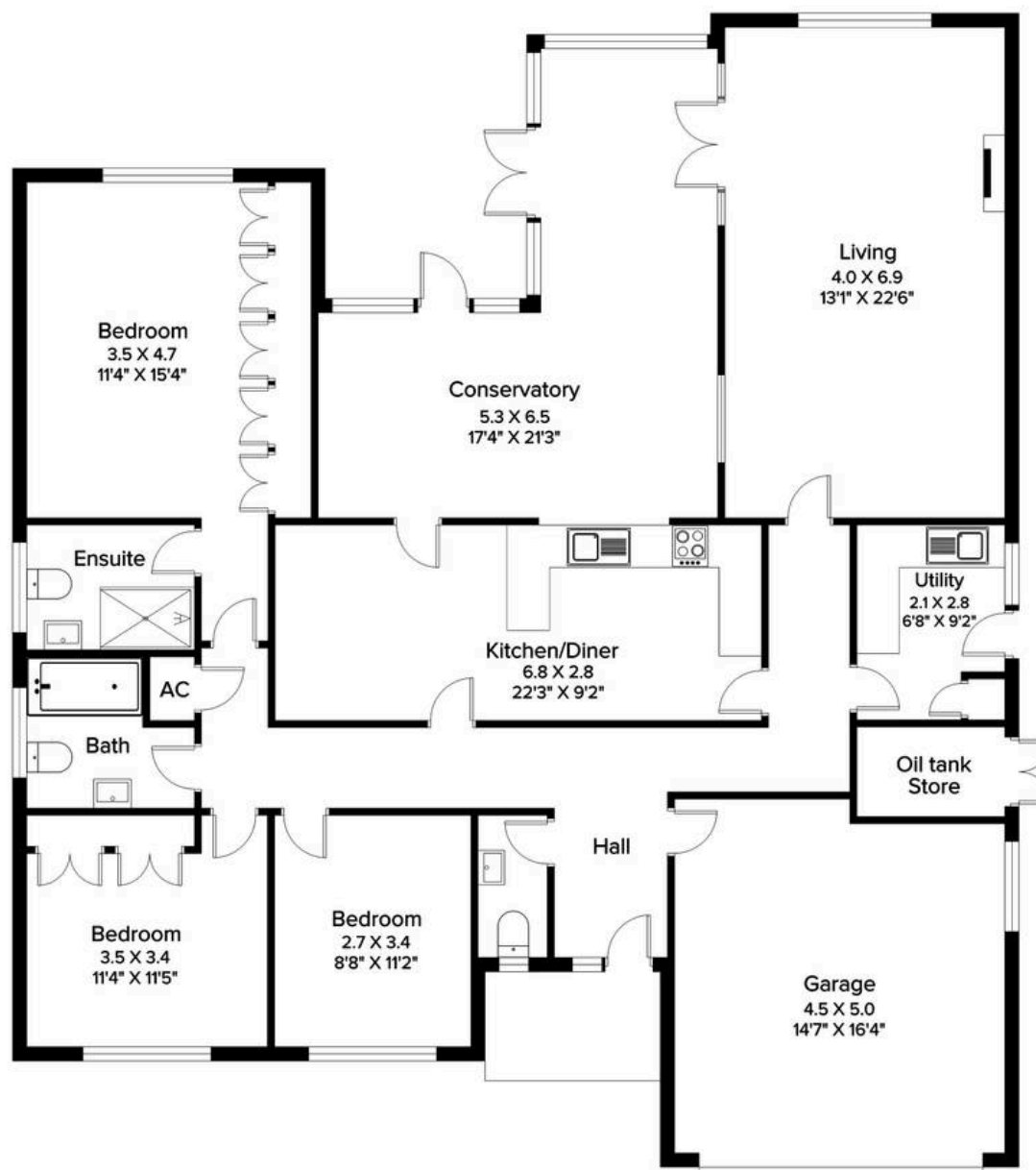






NOT TO SCALE

Approximate Total Floor Area 181 Sq m - 1948 Sq ft



This plan is for illustration purposes only

You can include any text here. The text can be modified upon generating your brochure.



NIKKI HOMES

PROPERTY CONSULTANTS