



5 Maple Close, Honeybourne
Evesham

Offers in Region of £550,000

5 Maple Close

Honeybourne, Evesham

Luxury home with stunning views, part of small 2020 development by Lockley Homes. 3-bed, high-quality finish, Charles Yorke kitchen, en-suite, landscaped garden, driveway, near amenities & schools. Service charge £50/month. Perfect location near Evesham & Broadway.

Council Tax band: E

Tenure: Share of Freehold

EPC Energy Efficiency Rating: A

EPC Environmental Impact Rating: A

- Build By Lockley Homes
- Stunning And Popular Cul-De-Sac
- Open Plan Living / Kitchen / Dining Room
- Underfloor Heating Throughout Downstairs
- Three Double Bedrooms
- Two High Specification Bathrooms
- Village Location With Great Links To London
- Attractive Countryside Views
- Beautiful Rear Garden
- Downstairs W/C









GARDEN

REAR GARDEN

Fully extendable electronic awning, installed 2023.

CAR PORT

1 Parking Space

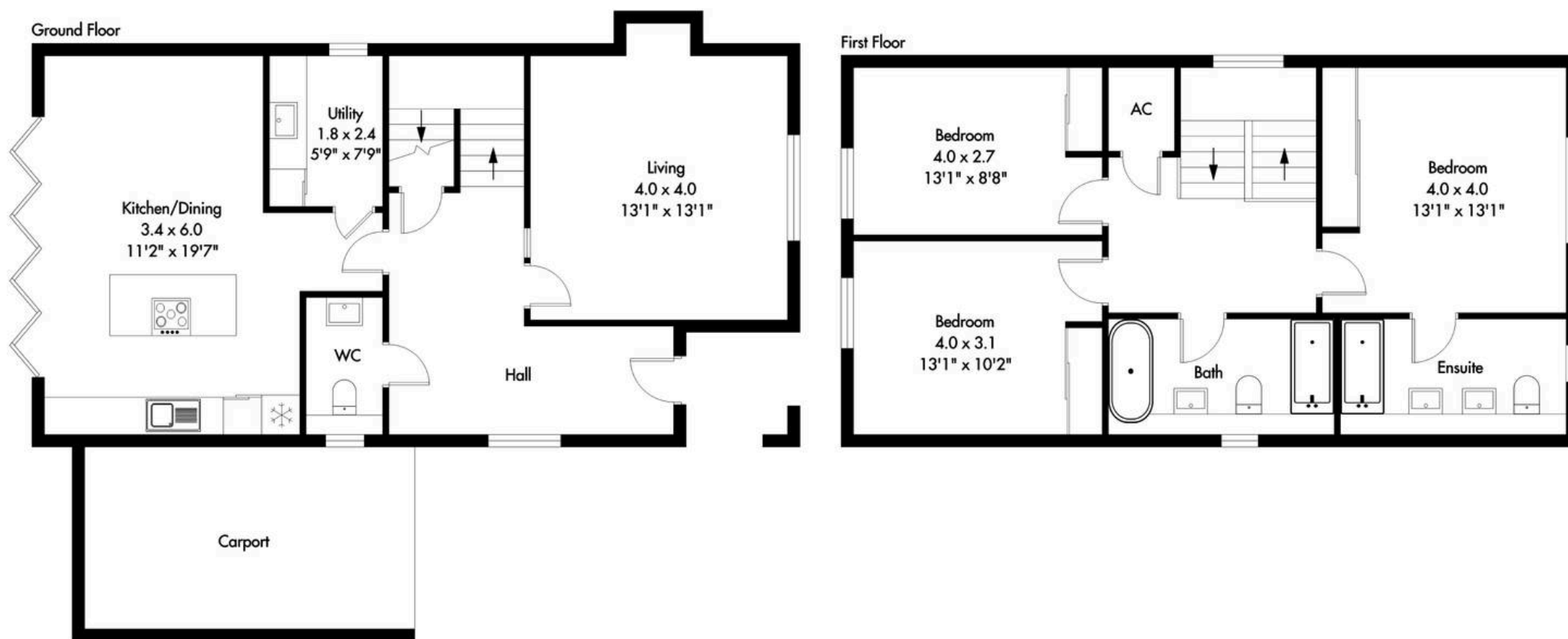
DRIVEWAY

1 Parking Space



NOT TO SCALE

Approximate Total Floor Area
137.08 Sq m - 1475 Sq ft



This plan is for illustration purposes only

You can include any text here. The text can be modified upon generating your brochure.



NIKKI HOMES

PROPERTY CONSULTANTS