



6 Denne Close, Stratford-Upon-Avon

Stratford-Upon-Avon

£600,000

6 Denne Close

Stratford-Upon-Avon, Stratford-Upon-Avon

Fantastic 4-bed detached house on impressive plot in quiet cul-de-sac. Spacious rooms, family bathroom, well-maintained garden, double garage, ample parking, and potential for outdoor living. Ready to move in, a true gem for families seeking tranquillity.

Council Tax band: E

Tenure: Freehold

EPC Energy Efficiency Rating: E

EPC Environmental Impact Rating:

- Impressive Plot Within Cul-De-Sac
- Detached Family Home with Lovely Views
- Spacious Front to Rear Reception Room
- Separate Breakfast Kitchen
- Family Bathroom with Separate W/C
- Double Garage and Parking for Several Cars









GARDEN

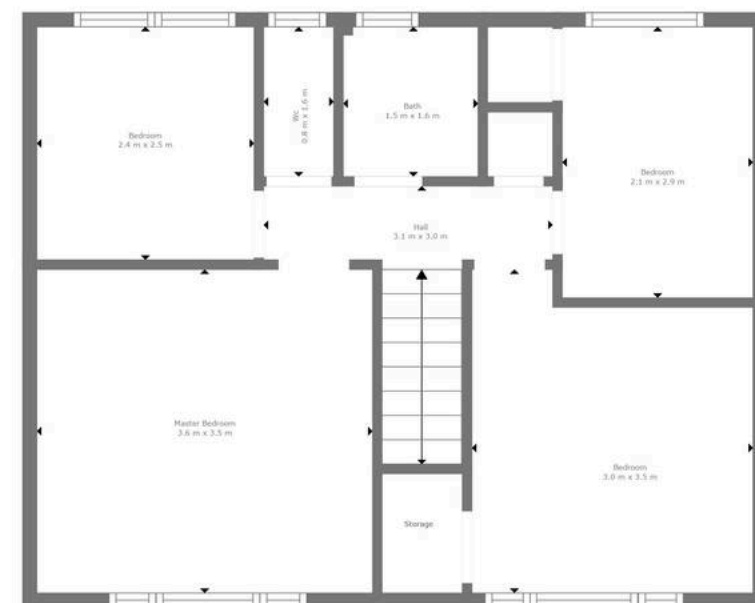
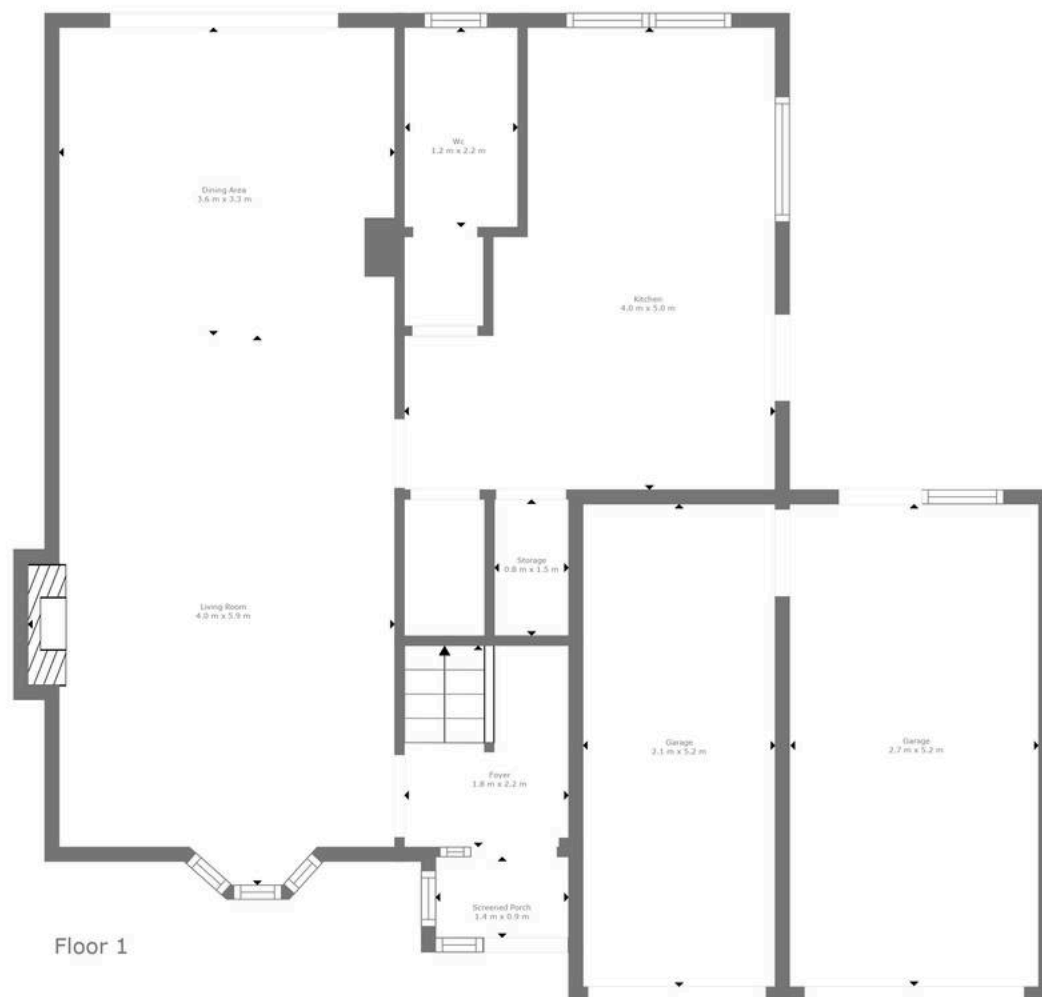
DOUBLE GARAGE

2 Parking Spaces

DRIVEWAY

6 Parking Spaces





TOTAL: 107 m2
FLOOR 1: 59 m2, FLOOR 2: 48 m2
EXCLUDED AREAS: GARAGE: 25 m2, SCREENED PORCH: 1 m2, STORAGE: 1 m2,
FIREPLACE: 1 m2

Floor Plan Created By Cubicasa App. Measurements Deemed Highly Reliable But Not Guaranteed.

You can include any text here. The text can be modified upon generating your brochure.



NIKKI HOMES

PROPERTY CONSULTANTS