



Apt 9, Jephson House, 24 Willes Road

Leamington Spa

In Excess of **£550,000**

Apartment 9

Jephson House, Leamington Spa

Modern spacious living in an historic building in the heart of Leamington Spa. Character features throughout. 2/3 bed, 1670 SQ FT. Open plan living and dining area on the ground floor. Externally, secure gated parking. Private garden and bike store. Stunning views of Jephson Gardens. Tenure: Leasehold

- Character features & high specification throughout, stunning communal entrance with elevator.
- Modern spacious living in an historic building in the heart of Leamington Spa
- Fully equipped kitchen with integrated appliances & granite countertops
- Master en-suite & family bathroom
- Stunning views over the award winning Jephson Gardens
- Newbold Comyn & The Grand Union Canal afford beautiful walks & cycle rides from your doorstep
- Easy pedestrian access to the heart of Leamington Spa & excellent international & intercity links
- Open plan living & dining area on the ground floor. 2/3 Bedrooms to the top floor
- Secure gated parking & private garden & bike store



Apartment 9

Jephson House, Leamington Spa

Modern spacious living in an historic building in the heart of Leamington Spa. Character features throughout. 2/3 bed, 1670 SQ FT. Open plan living and dining area on the ground floor. Externally, secure gated parking. Private garden and bike store. Stunning views of Jephson Gardens. Tenure: Leasehold

- Character features & high specification throughout, stunning communal entrance with elevator.
- Modern spacious living in an historic building in the heart of Leamington Spa
- Fully equipped kitchen with integrated appliances & granite countertops
- Master en-suite & family bathroom
- Stunning views over the award winning Jephson Gardens
- Newbold Comyn & The Grand Union Canal afford beautiful walks & cycle rides from your doorstep
- Easy pedestrian access to the heart of Leamington Spa & excellent international & intercity links
- Open plan living & dining area on the ground floor. 2/3 Bedrooms to the top floor
- Secure gated parking & private garden & bike store





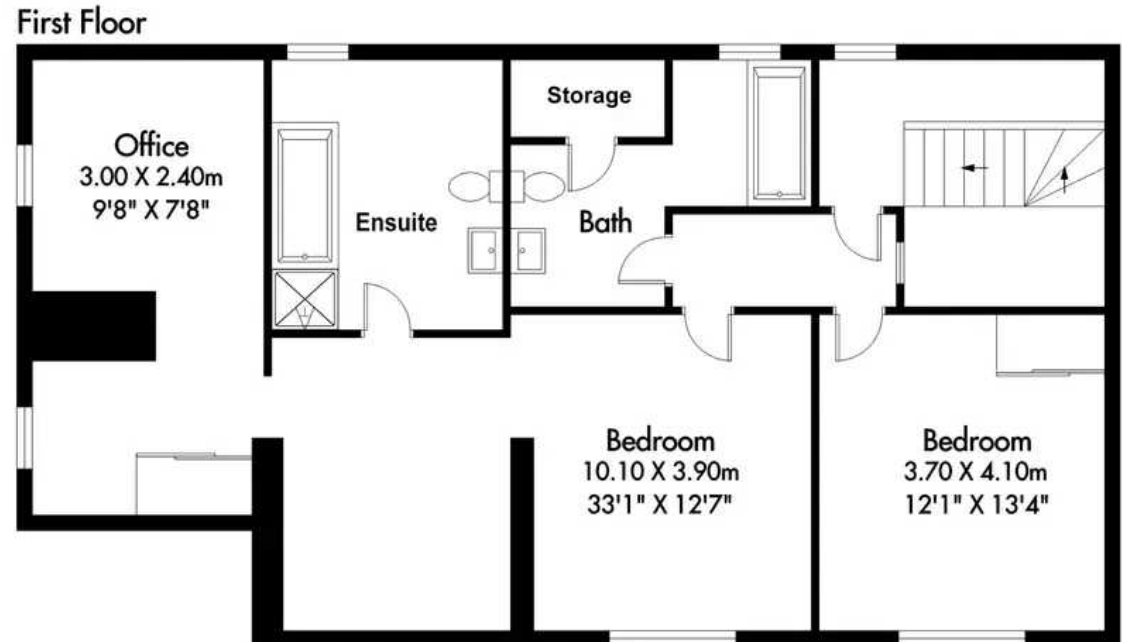
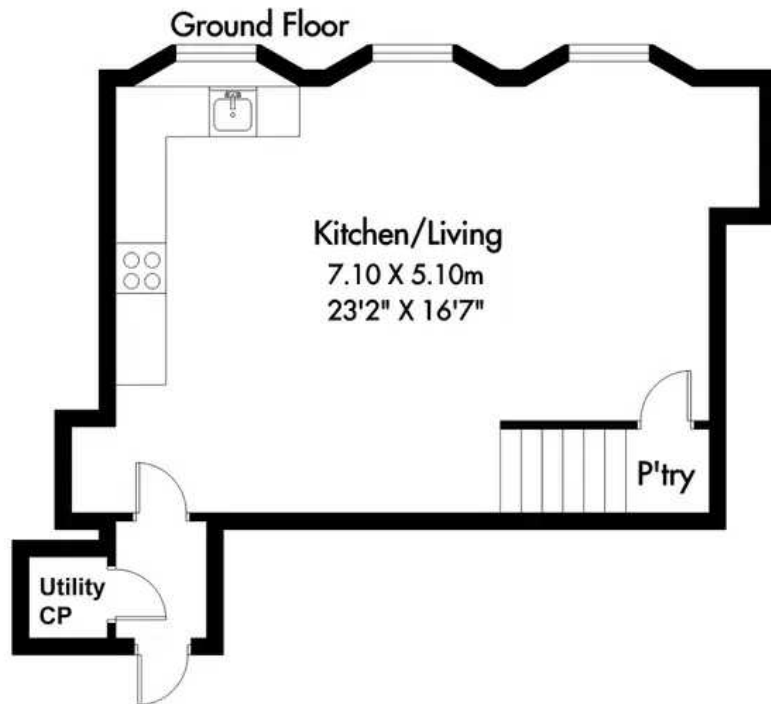






NOT TO SCALE

Approximate Total Floor Area
155.17 Sq m - 1670.23 Sq ft



This plan is for illustration purposes only

You can include any text here. The text can be modified upon generating your brochure.



NIKKI HOMES

PROPERTY CONSULTANTS